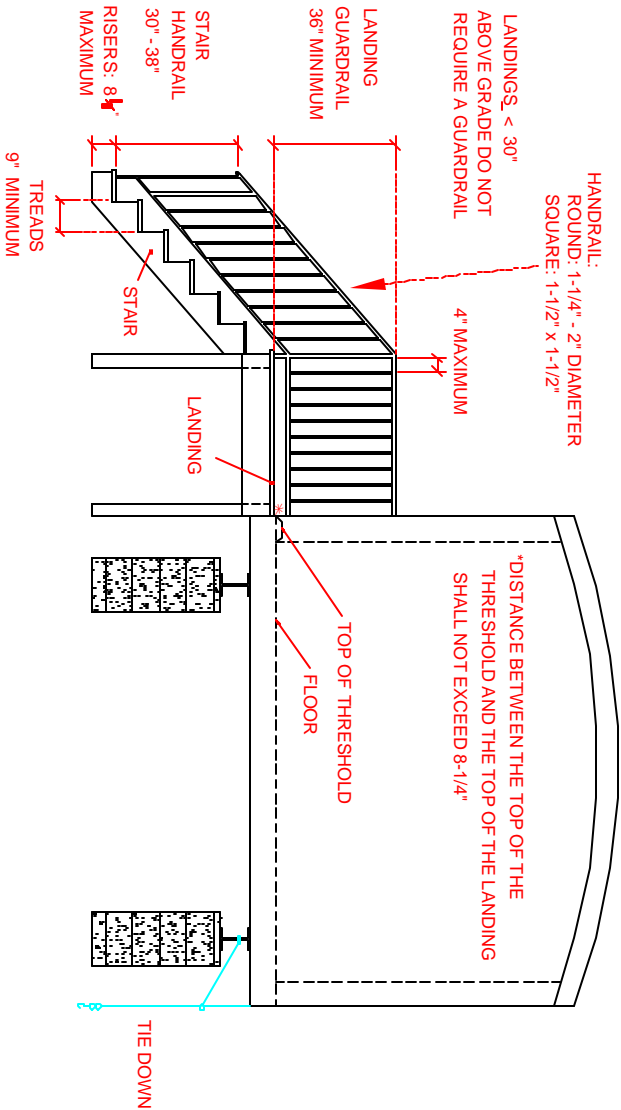
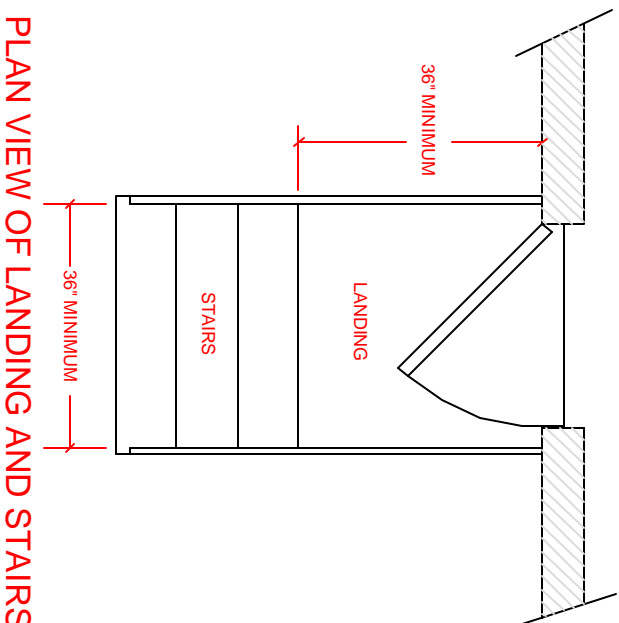


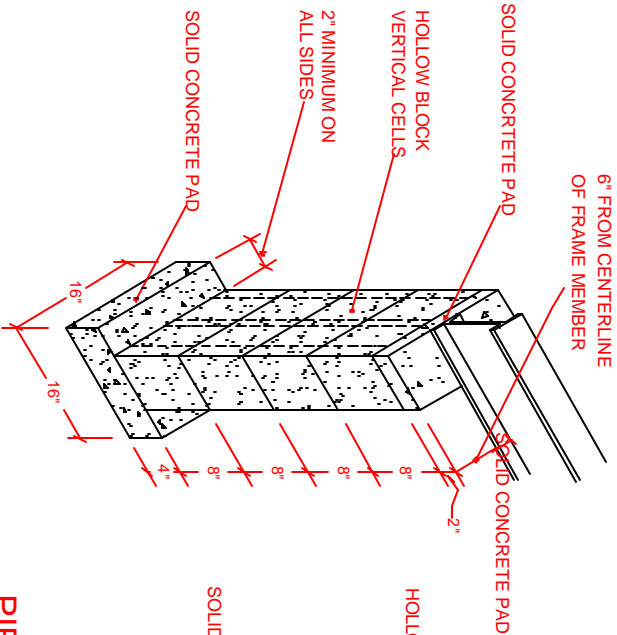
# ADDRESS MUST BE POSTED



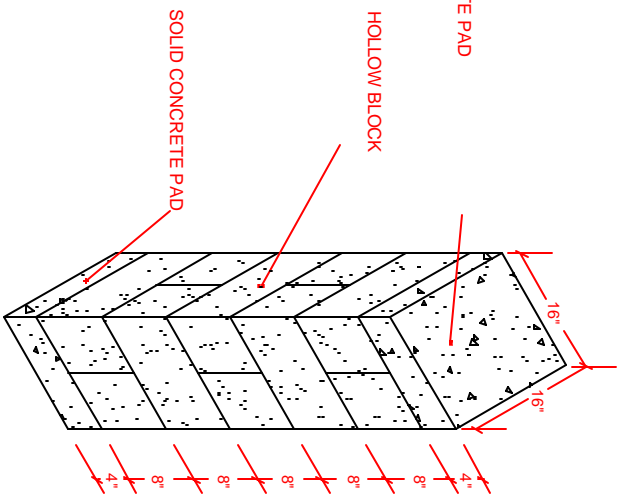
ELEVATION VIEW OF LANDING AND STAIRS



PLAN VIEW OF LANDING AND STAIRS



LESS THAN 40" IN HEIGHT



PIER 40" TO 80" IN HEIGHT AND CORNER PIERS OVER 24 INCHES

**NOTES:**

- 1) IF THE STAIRS ARE MORE THAN 3 RISERS AND LESS THAN 30" ABOVE GRADE A HANDRAIL IS REQUIRED TO A HEIGHT OF 30" - 38"
- 2) IF A COMBINATION HANDRAIL/GAURD RAIL IS REQUIRED, IT MUST BE 34" MEASURED FROM THE LEADING EDGE OF THE TREAD TO THE TOP OF THE RAIL IN A VERTICAL DIRECTION
- 3) PIERS MORE THAN 80" SHALL REQUIRE ENGINEERING
- 4) FOUNDATION ANCHORING REQUIREMENTS SHALL NOT APPLY TO EXISTING MOBILE HOMES.
- 5) ALL MOBILE HOMES SHALL REQUIRE TIE DOWNS AS PRESCRIBED BELOW.

**FLOOD ZONE:**

- UP TO 50'; 3 OVER TOP; 6 FRAME TIES (EACH SIDE)
- 50' & OVER; 4 OVER TOP; 7 FRAME TIES (EACH SIDE)

**NON ZONE**

- UP TO 40'; 2 OVER TOP; 6 FRAME TIES (3 EACH SIDE)
- 41' TO 60'; 3 OVER TOP; 10 FRAME TIES (5 EACH SIDE)
- 61' TO 82'; 3 OVER TOP; 12 FRAME TIES (6 EACH SIDE)

